

## Discoid Lupus Erythematosus (DLE)

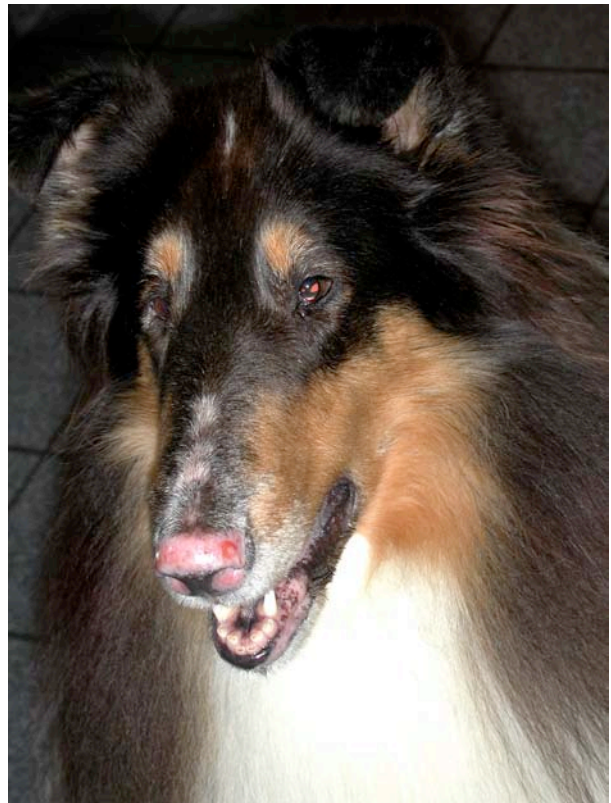
Discoid Lupus Erythematosus, also called DLE, is an immune-mediated skin disease in which localized skin lesions develop and are exacerbated with sun exposure. The cause of DLE is unclear although it appears to have a genetic component.

Age or sex predispositions have not been substantiated. Dog breeds such as Shetland Sheepdogs, Rough Collies, German Shepherd Dogs, and Siberian Huskies are predisposed.

Clinically, animals with DLE have redness of the skin with scaling, crusting, and depigmentation. The nose, lips, ears, and skin around the eyes are common sites for lesions to develop. Animals usually exhibit hair loss in affected areas. In severe cases, scarring and skin ulcerations can occur.

A thorough examination and history is done to determine if the lesions are localized and whether any systemic signs are present. An important observation in determining a diagnosis is the area of the nose affected. Skin diseases other than immune-mediated diseases generally do not affect the non-haired areas of the nose. Biopsies of skin lesions can be taken to help confirm a diagnosis.

The majority of cases can be controlled with a combination of tetracycline and niacinamide. Topical medications such as 0.1% tacrolimus ointment may also be used in less severe cases. Steroids (methylpredni-



solone, prednisone, prednisolone) are nother treatment option in severe cases. Sun exposure should be limited or topical sun-blocking creams should be applied.